

# BIG RIVER STEEL

ECO-FRIENDLY WATER TREATMENT PLANT



STEEL'S PREMIER TECHNOLOGY EVENT  
**AISTech2016**  
16-19 May • Pittsburgh, Pa., USA  
David L. Lawrence Convention Center



# RUSSULA

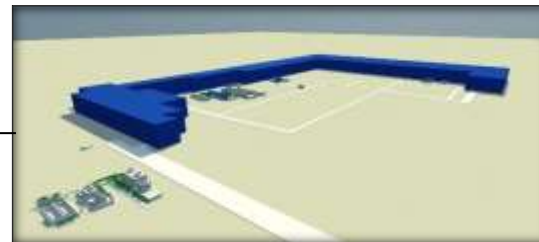
**INTRODUCTION**



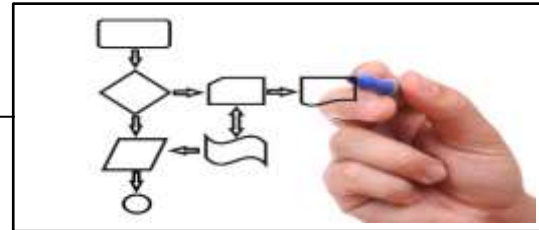
**CHALLENGES**



**LAYOUT**



**PROCESS TECHNOLOGY**



**EFFICIENCY**





## INTRODUCTION



1st Phase : 1,5 Mtpy  
2nd Phase: 3 Mtpy

EAFF + LF + RH

CCM

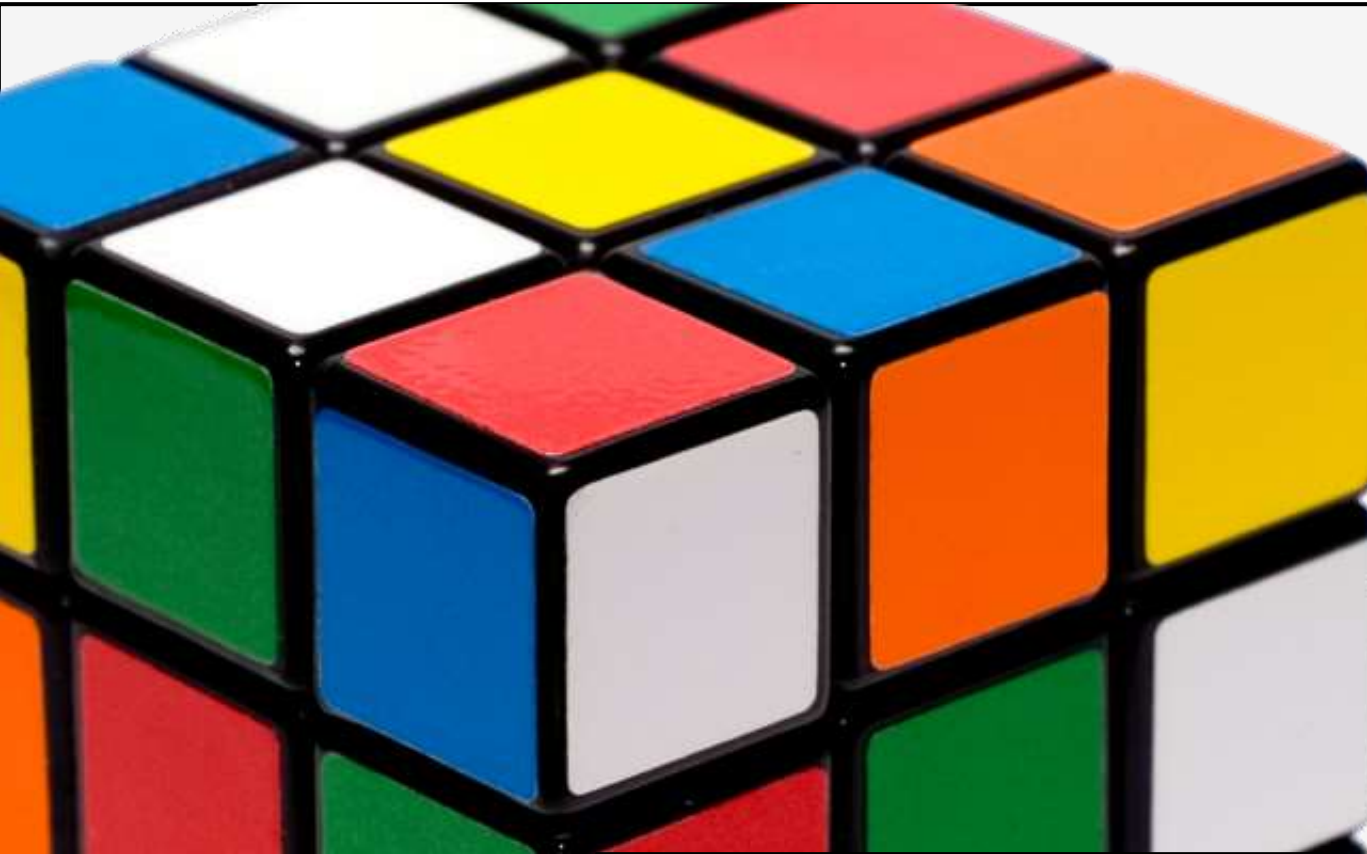
TUNNEL  
FURNACE + CSP

COLD MILL  
+  
GALVANIZED LINE

- 1st PHASE :**
- 150 Tn EAF
  - 150 Tn LF
  - 150 Tn RH
  - CSP ( 6 Stands)
  - PLS/SPM/CGL/BAF

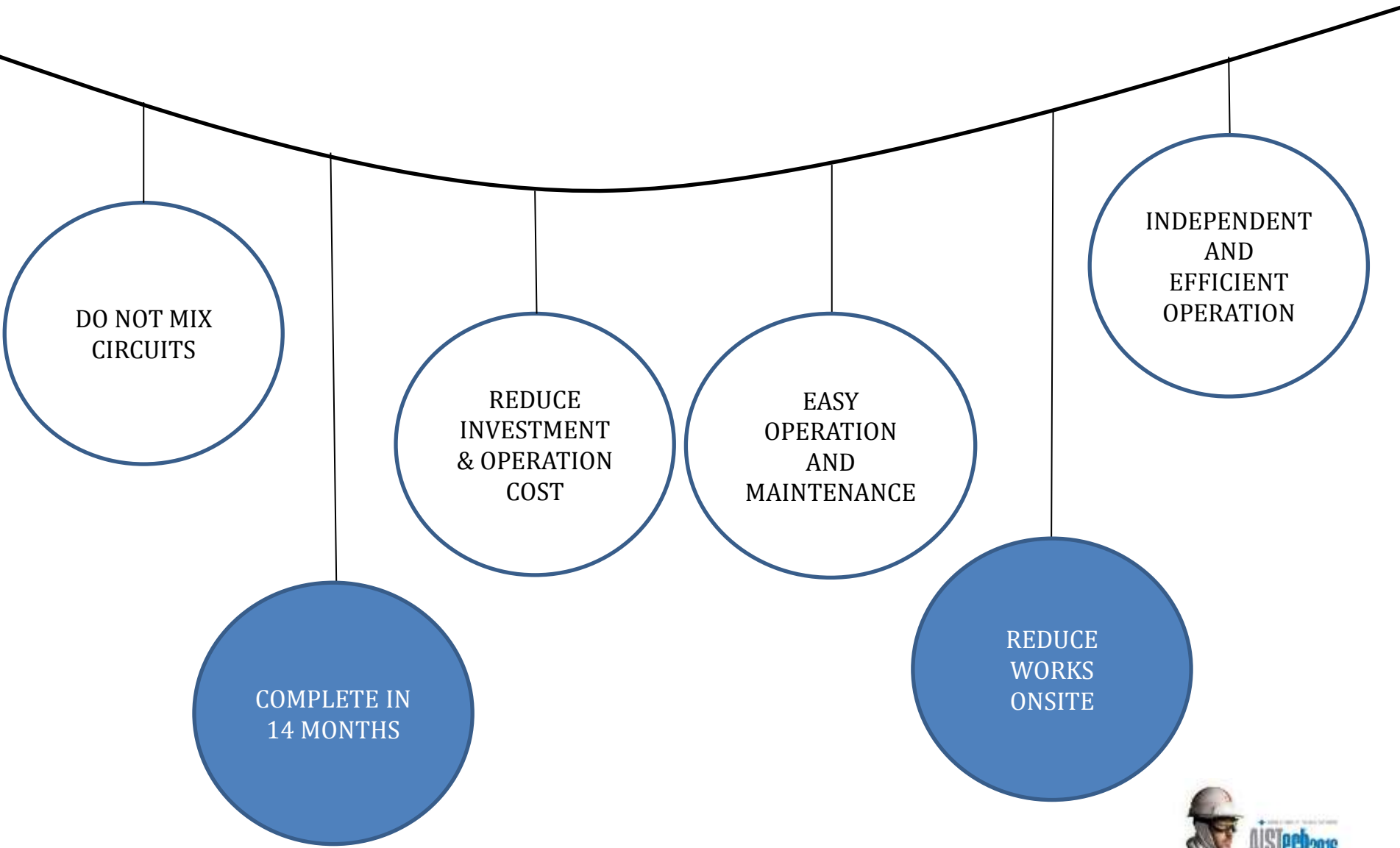






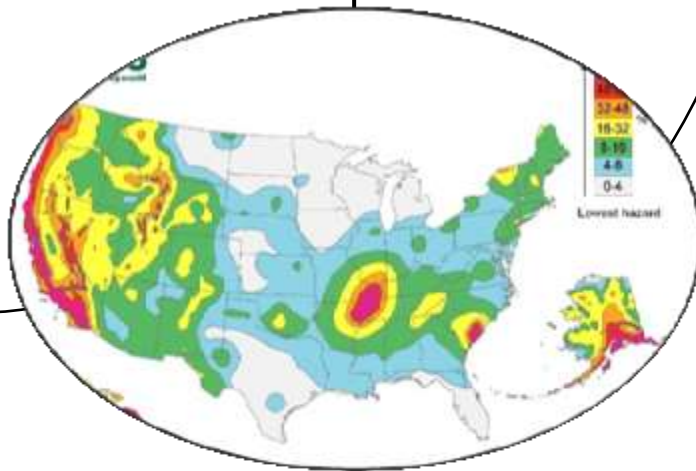
## CHALLENGES

**DESIGN PREMISES**



## CIVIL DESIGN & EXECUTION

- Proximity of New Madrid, Missouri.
- New Madrid area contains the highest level of seismicity in the central and eastern parts of the United States.



- Very high water level.
- Drain pumps needed and sheet piling must be used.
- Reduce excavations as much as possible.



## PIPING DESIGN



- Avoid Corrosion
- Pipes towards buildings ALL buried.
- HDPE pipes

- Tight Project schedule.
- Reduce erection time, waste material and cost.
- PREFABRICATED pipe.

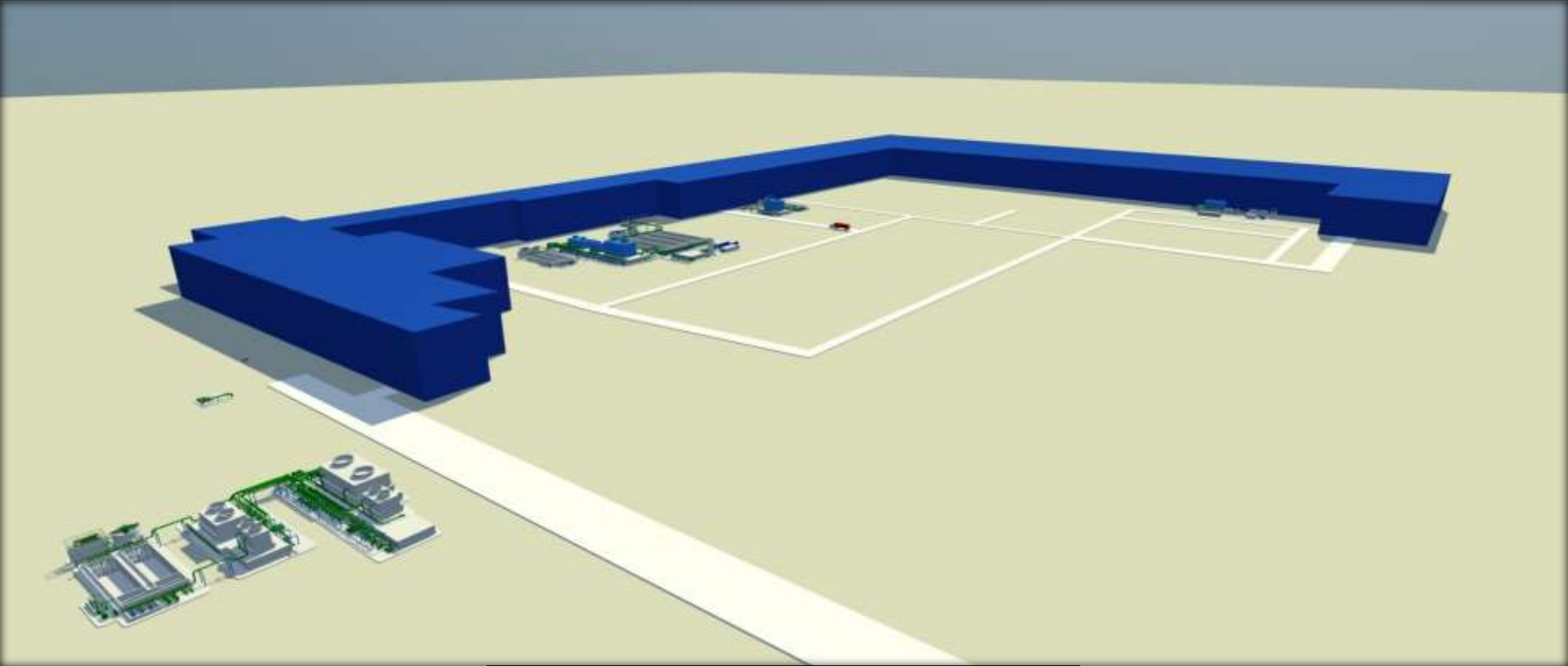


## OPERATION & SOFTWARE

- Fully Automated system
- Easy operation and maintenance.



- Efficiency
- Reduce Operational Cost
- Automation and signals gathering improve operation.



## LAYOUT

002	010842	1	U	LAYOUT HSM WTP BIG RIVER STEEL
003	010846	1	U	LAYOUT COLD MILL WTP BIG RIVER STEEL
004	020379	1	U	LAYOUT WASTE WATER SYSTEM BIG RIVER STEEL

## COLD MILL AREA

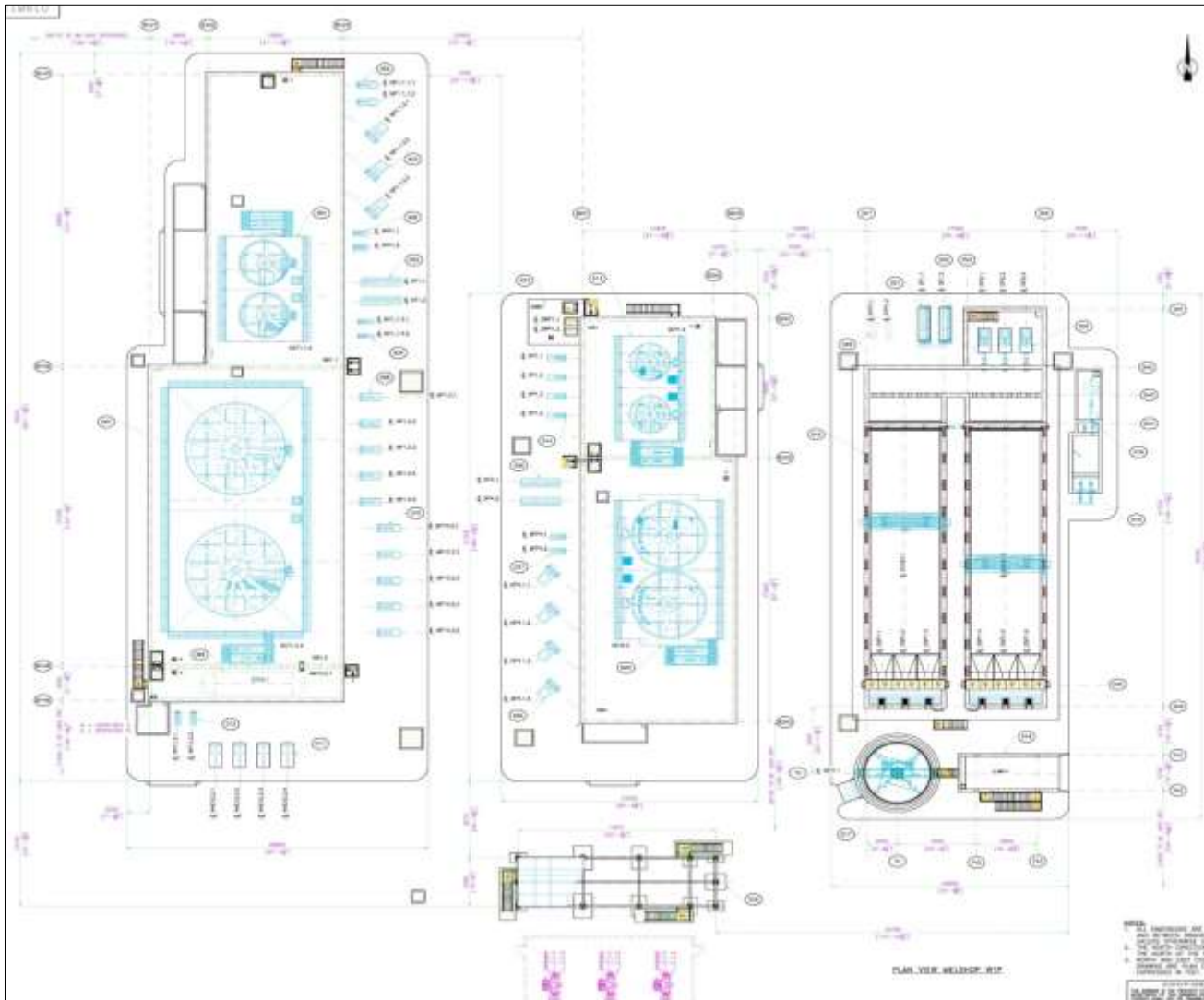
## MELTSHP AREA

## HSM AREA



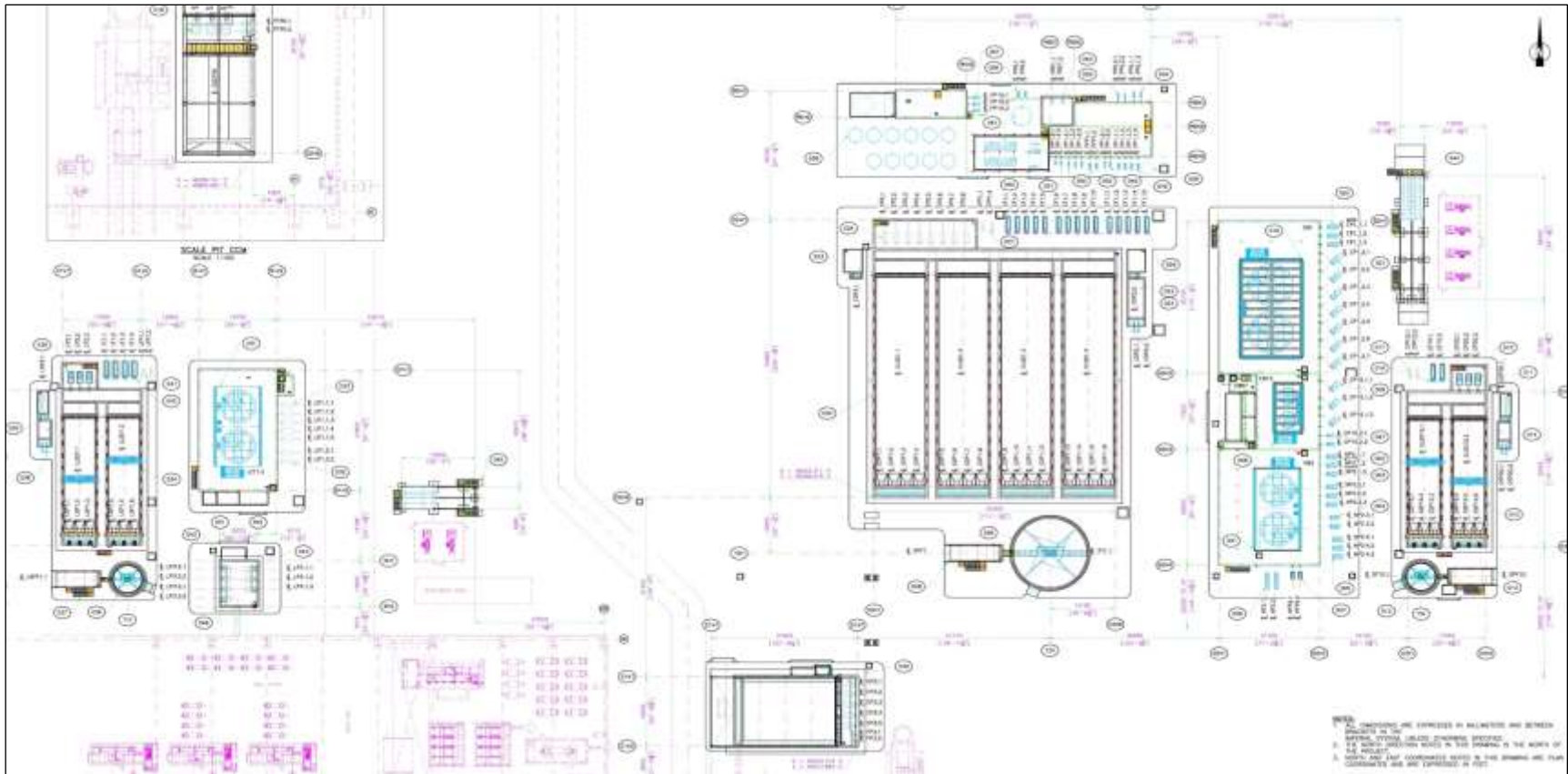


## MELTSHOP AREA



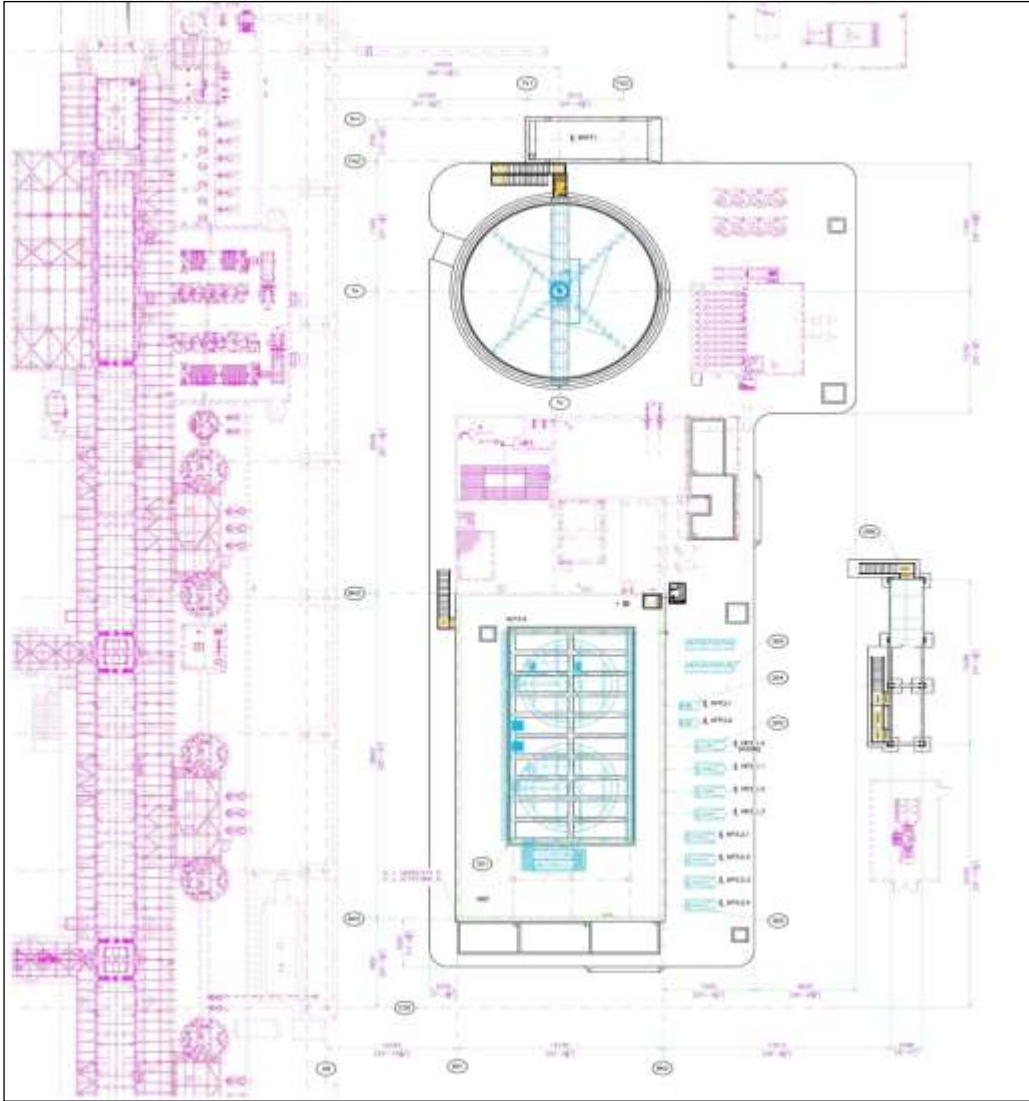
- NCW EAF+LF+RH
- NCW EAF SPRAYS
- NCW GAS DUCT
- CW DEGASSER
- ELECTRICAL ROOM



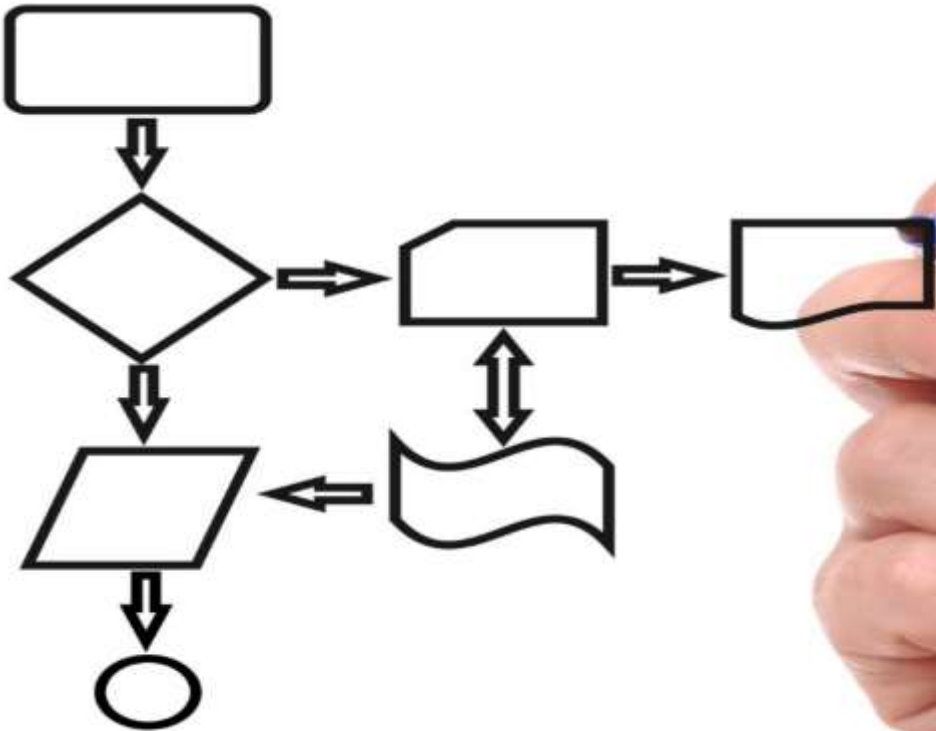
**HSM ( CSP ) AREA**

- PRETREATMENT
- CW CCM
- CW LAMINAR
- NCW HSM +CCM
- CW HSM
- ELECTRICAL ROOM

## COLD MILL AREA



- NCW COLD MILL
- WASTE WATER
- ELECTRICAL ROOM



**PROCESS TECHNOLOGY**



**PRETREATMENT**



**PROCESS WATER**



**EFFLUENTS TREATMENT**

**PRETREATMENT**

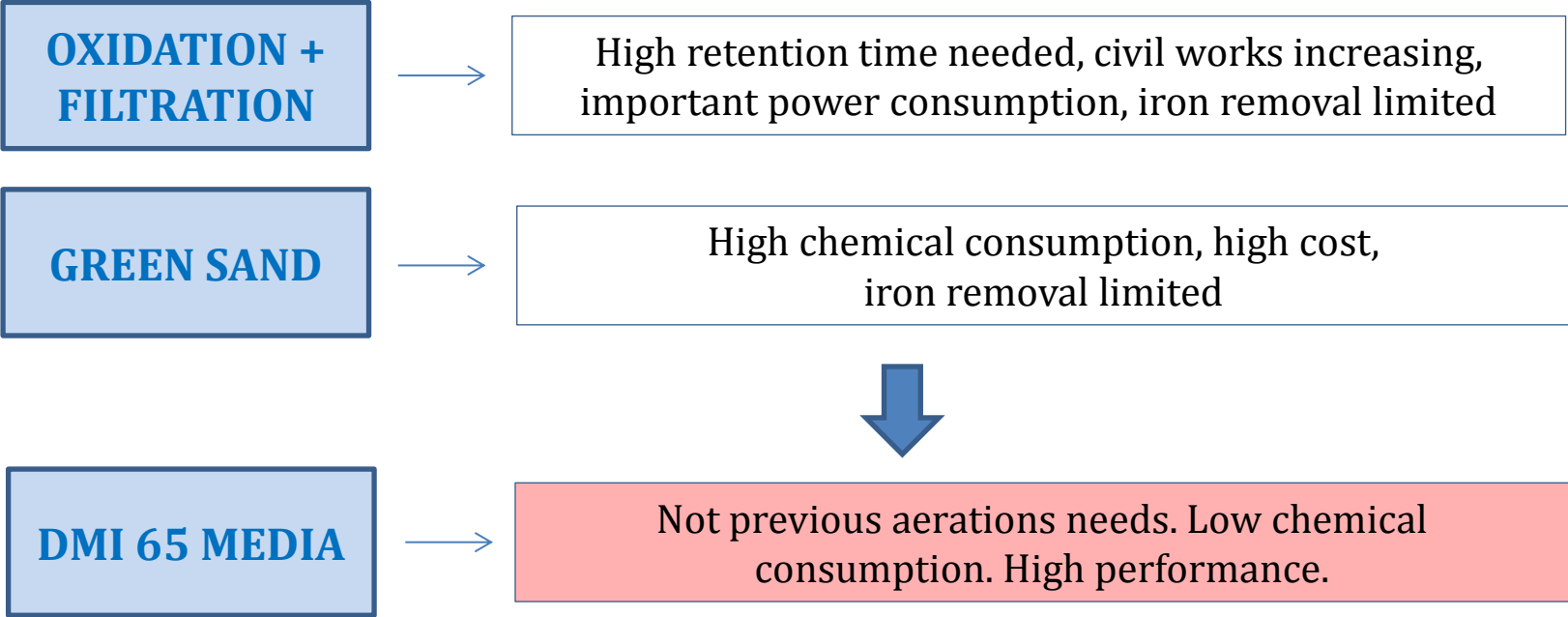




**IRON REMOVAL**

<b>DEEP WELLS</b> Iron Content 5 ppm	<b>REQUIREMENTS</b> Iron Content 0.1 ppm
---	---

Reliable technology with low operations costs and low investment ... **NEEDED**



# IRON REMOVAL



## Catalytic Filtration media

- Tailor made for the removal of Manganese & Iron.
- Silica sand based granular material, its active ingredients are permanently fused into the grain
- DMI-65 performs role of catalyst to promote oxidation of iron and manganese in solution into precipitate
- Also performs highest quality mechanical filtration

Potassium Permanganate not required  
Wide pH range  
Up to 10 years operation

## WATER QUALITY...

INDUSTRIAL WATER  
(IRON REMOVED)

SOFTENED  
WATER

DEMI  
WATER

EDI  
WATER

**PRETREATMENT**

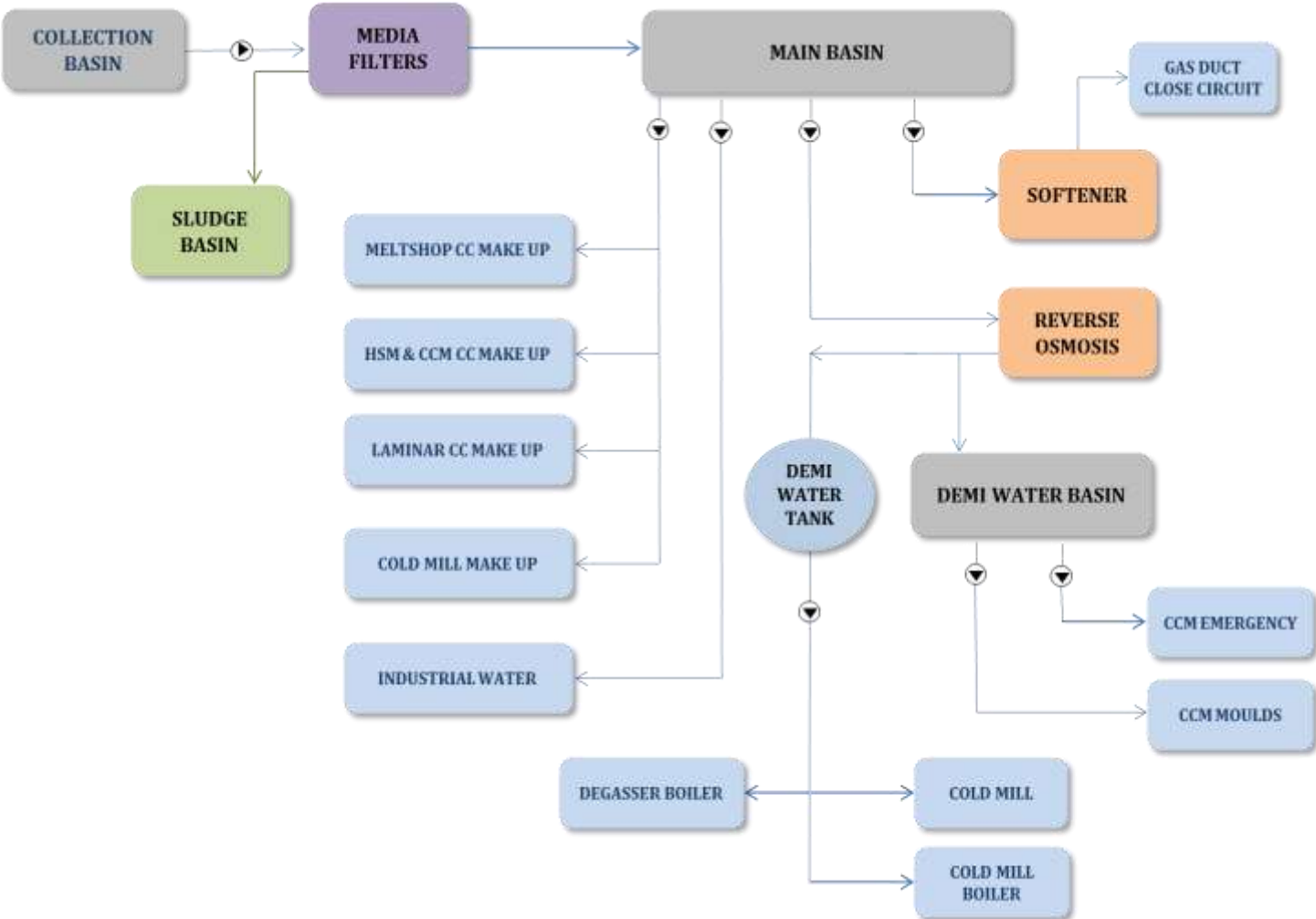
**WATER:** River

**FLOW:** 800 m<sup>3</sup>/h F

**IRON REMOVAL**

**RO / SOFTENER**

**READY FOR FUTURE**



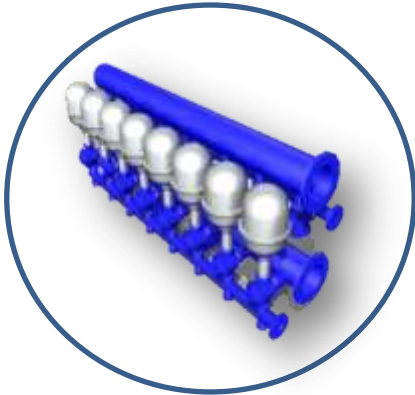


**PROCESS WATER**





## **COMMON TECHNOLOGY**



### **ALL FILTER SYSTEMS INCLUDE RING FILTERS ONLY**

*Side filtration 10% NCW*

*Total Filtration CW*



### **CONTACT SYSTEMS WITH DECANTING BASINS**

*( 2 UNIT MINIMUM)*



### **SUBMERSIBLE PUMPS IN SCALE PITS AND SLUDGE MANAGEMENT**

*( STAINLESS & VORTEX)*

**NCW EAF+LF**

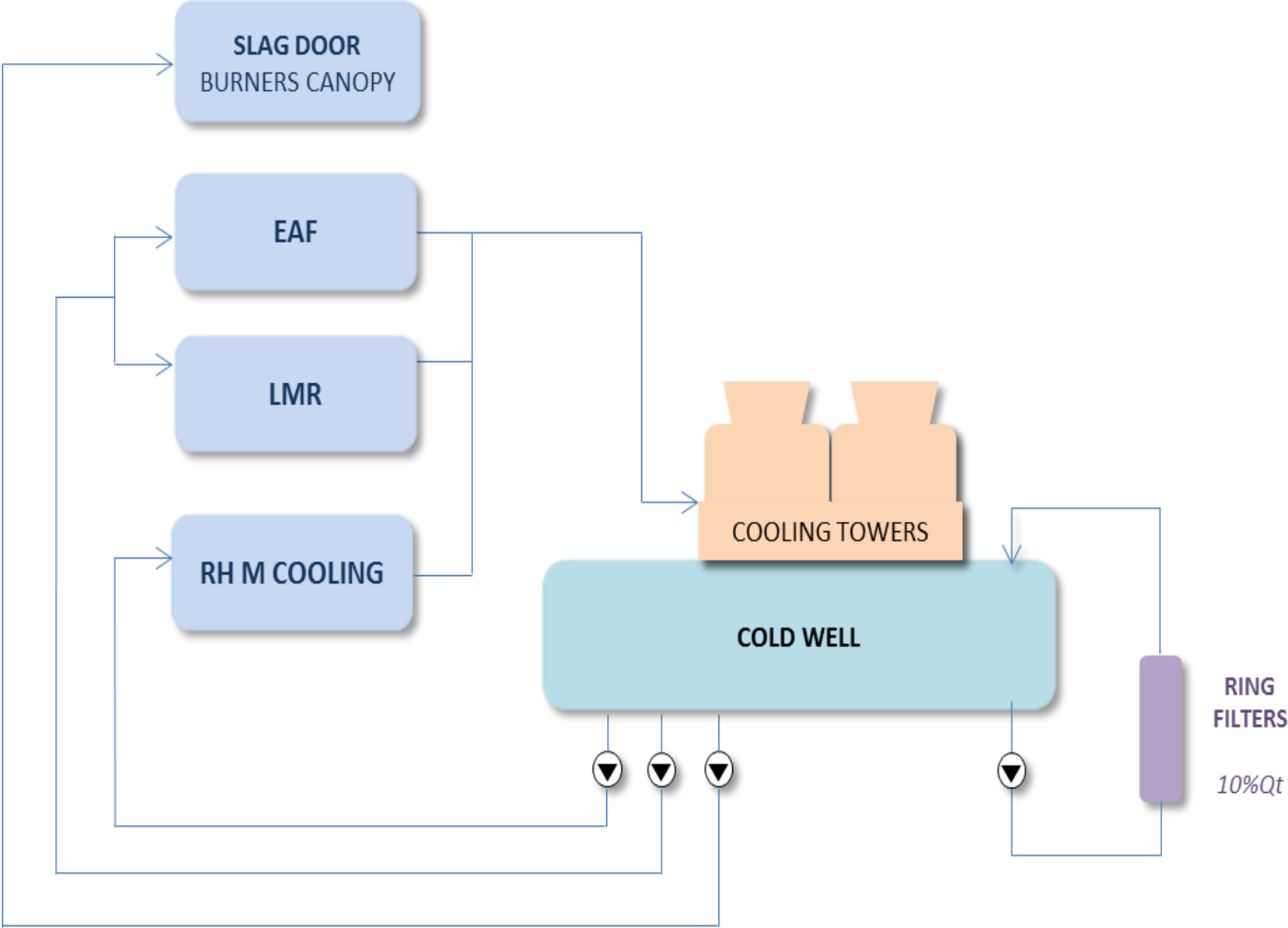
**WATER:** Clean

**PRESSURE:** 7 bar

**FLOW:** 1892 m3/h

**T DROP:** 15°C

**FUTURE EXPANSION**



# NCW Sprays

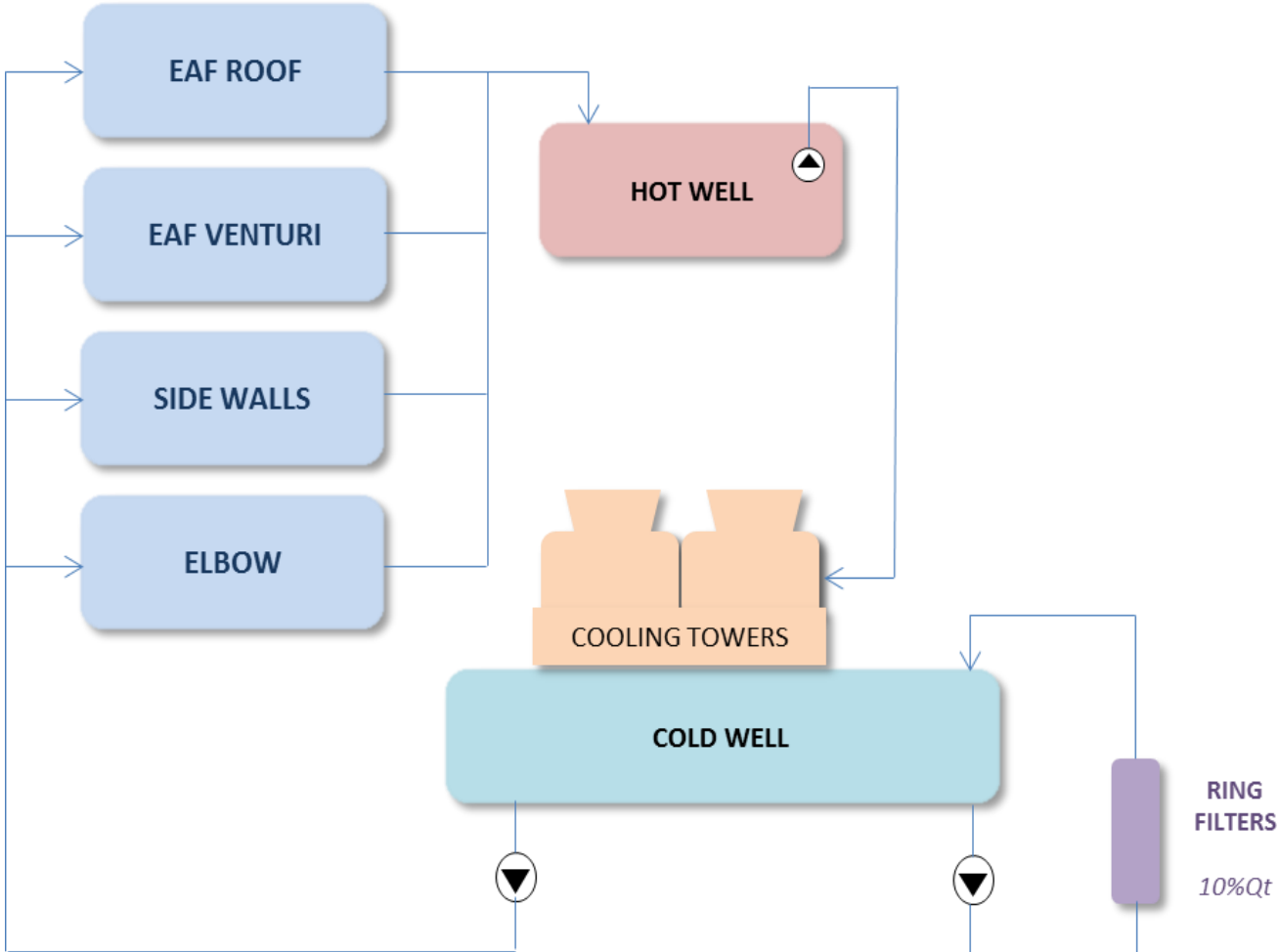
**WATER:** Clean

**PRESSURE:** 7 bar

**FLOW:** 3100 m3/h

**T DROP:** 15°C

**FUTURE EXPANSION**



**NCW Gas Duct**

**WATER: Clean**

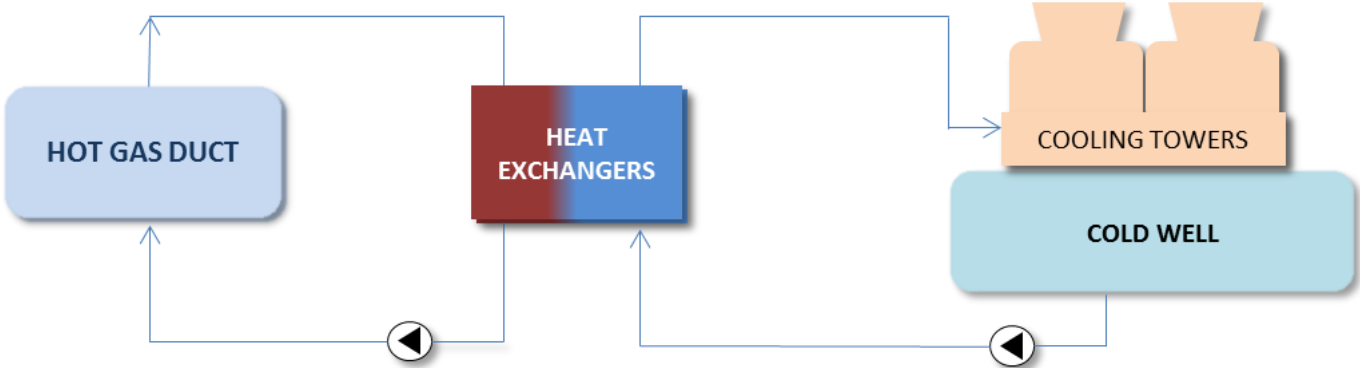
**PRESSURE: 5,5 bar**

**FLOW: 3350 m3/h**

**T DROP: 25 °C**

**CLOSE CIRCUIT**

**FUTURE EXPANSION**



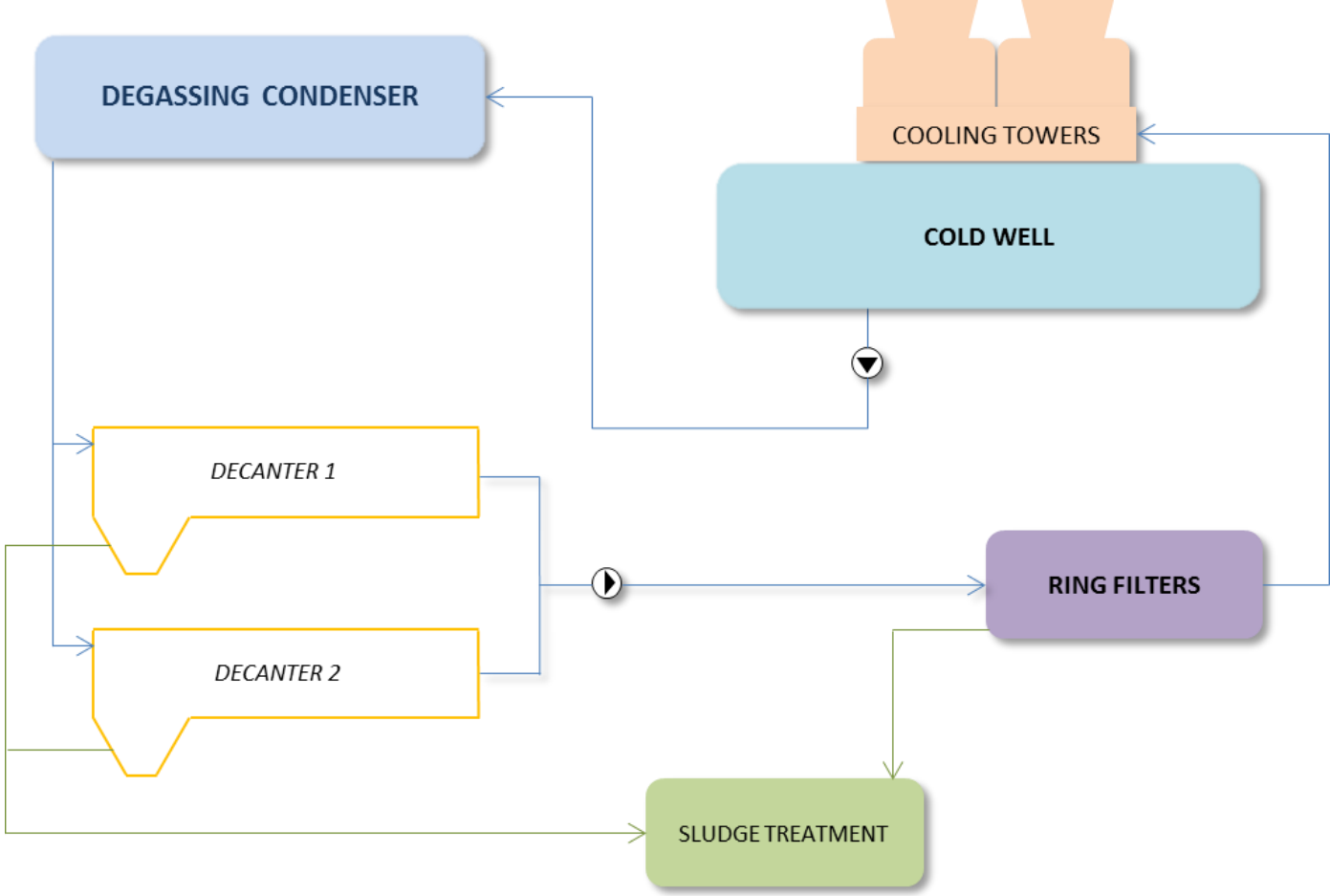
# CW Degasser

**WATER:** Dirty

**PRESSURE:** 4 bar

**FLOW:** 1040 m3/h

**TSS outlet :** 80 ppm





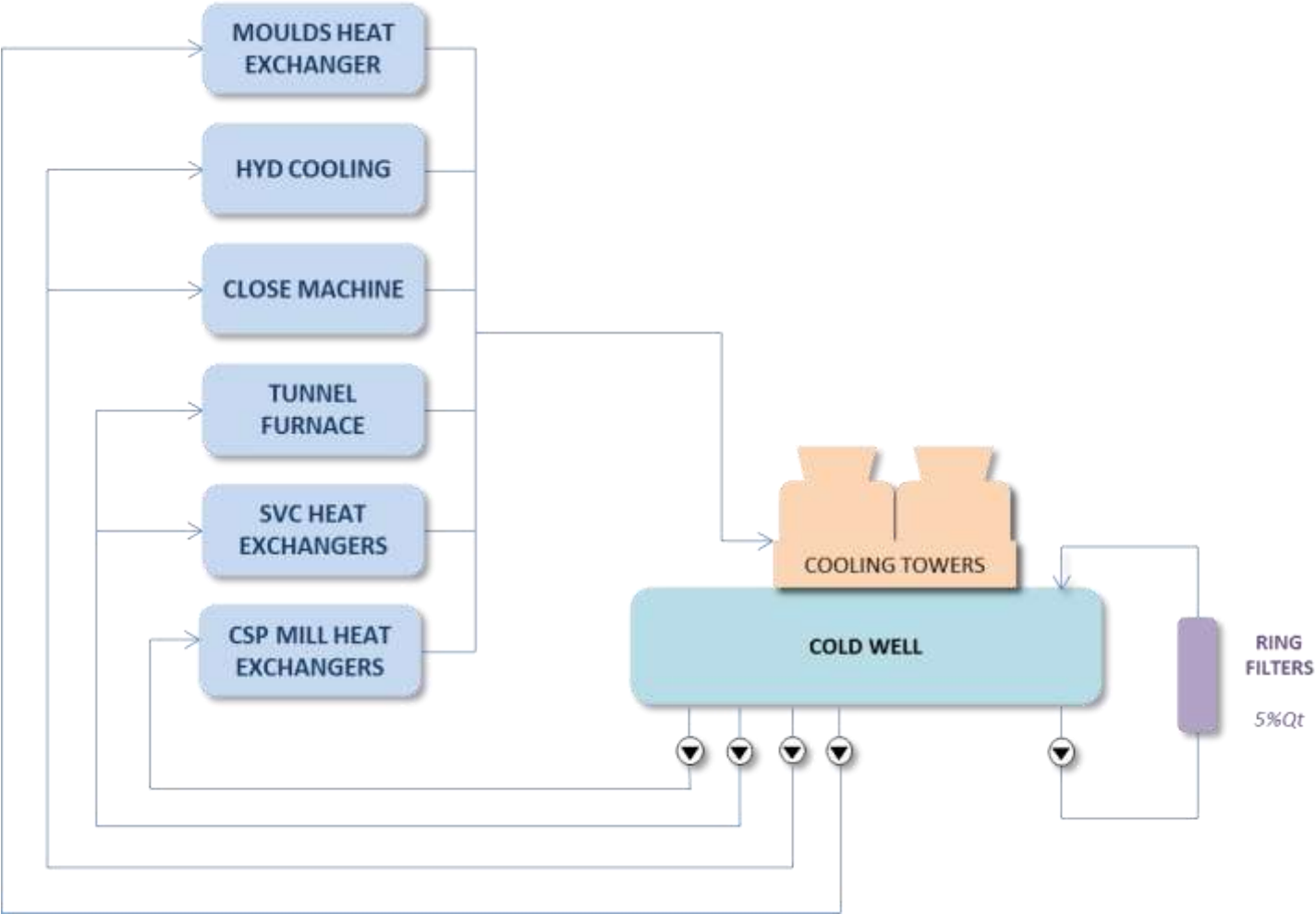
**NCW HSM & CCM**

**WATER:** Clean

**PRESSURE:** 7 bar

**FLOW:** 4180 m3/h

**FUTURE EXPANSION**



# CW CCM

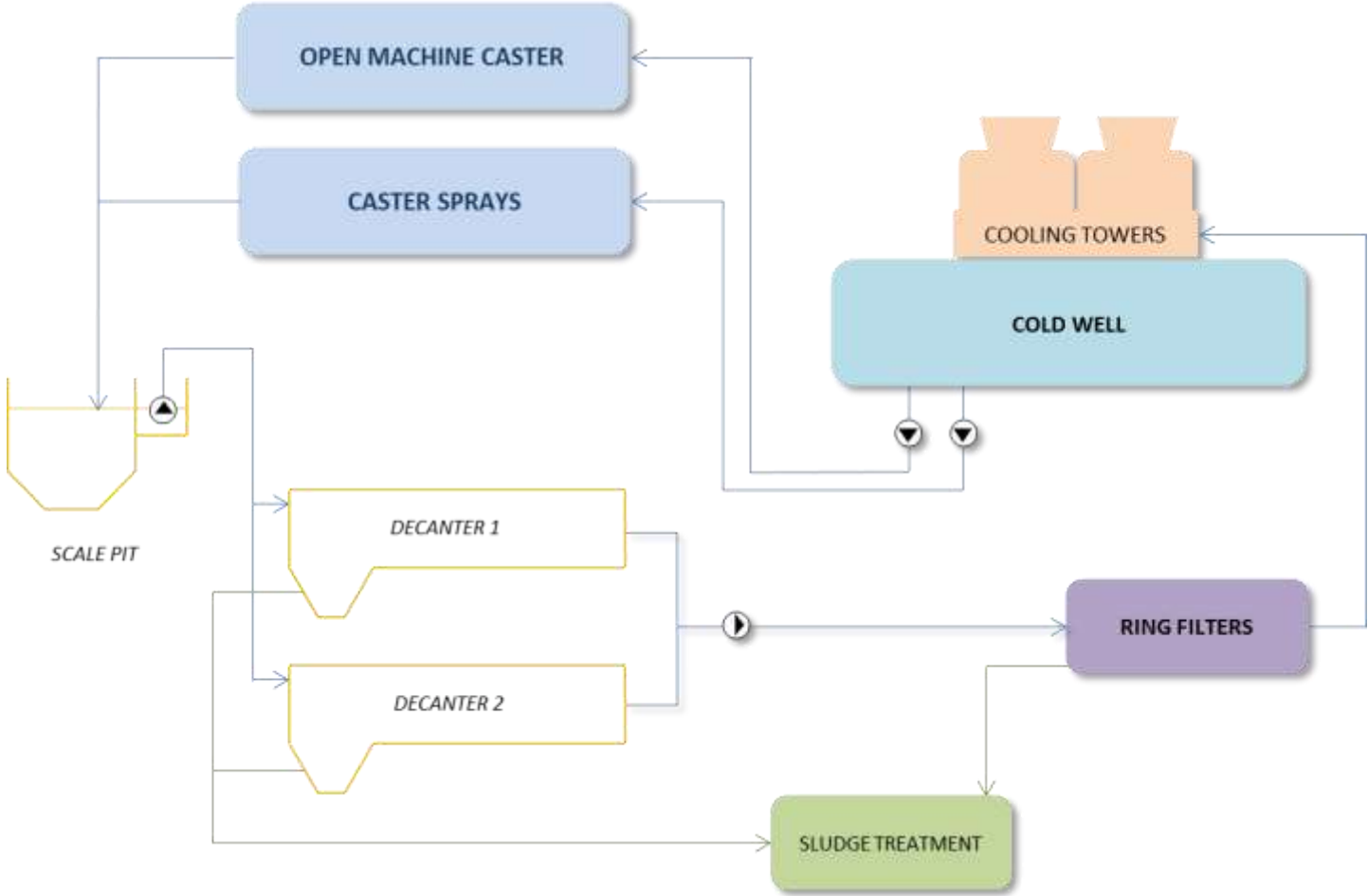
**WATER:** Dirty

**PRESSURE:** 16/8 bar

**FLOW:** 1165 m3/h

2x7 mts decanters

**FUTURE EXPANSION**



# CW HSM

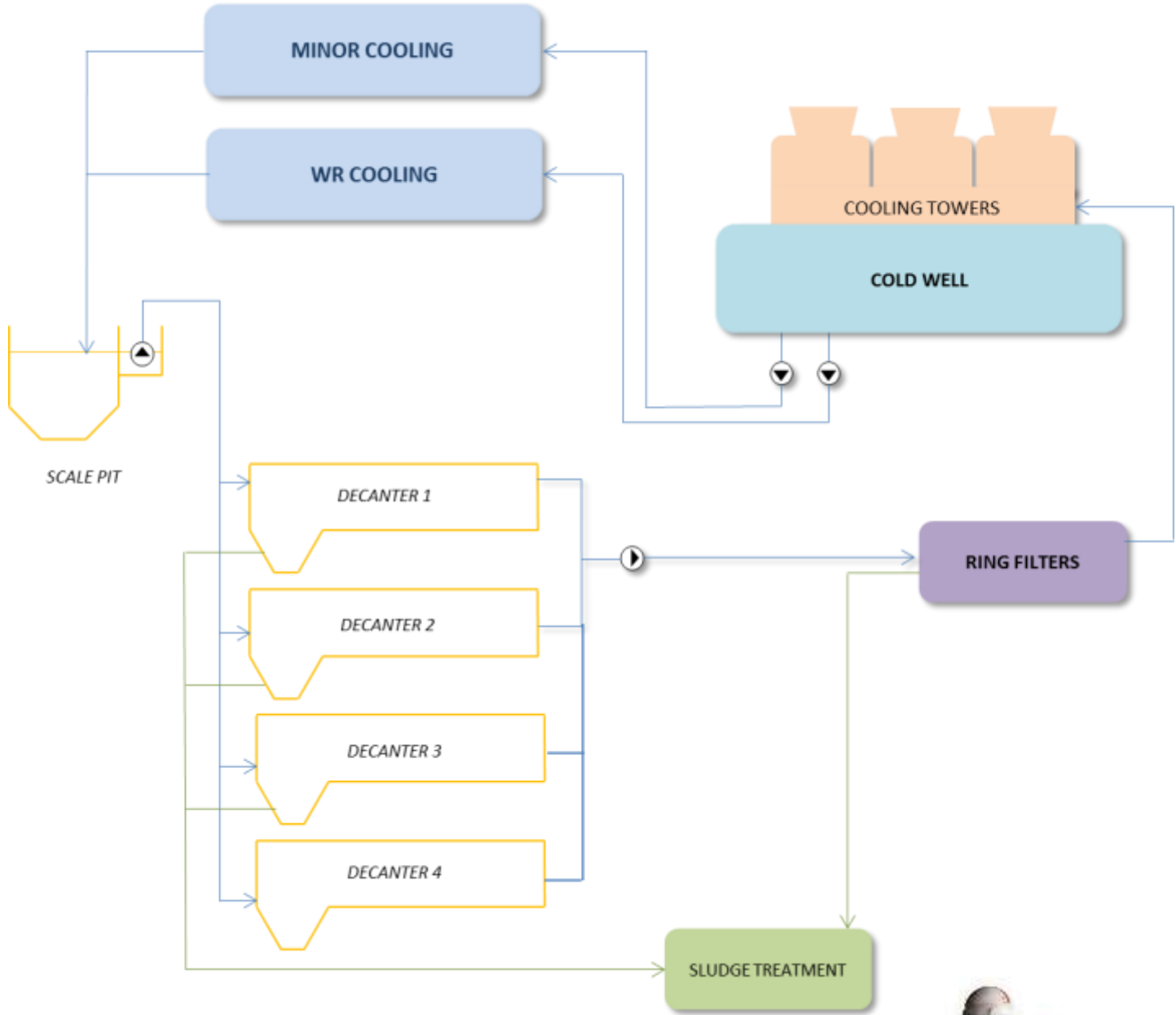
**WATER:** Dirty

**PRESSURE:** 13/6 bar

**FLOW:** 8000 m3/h

**4X 11 mts. decanter**

**FUTURE EXPANSION**



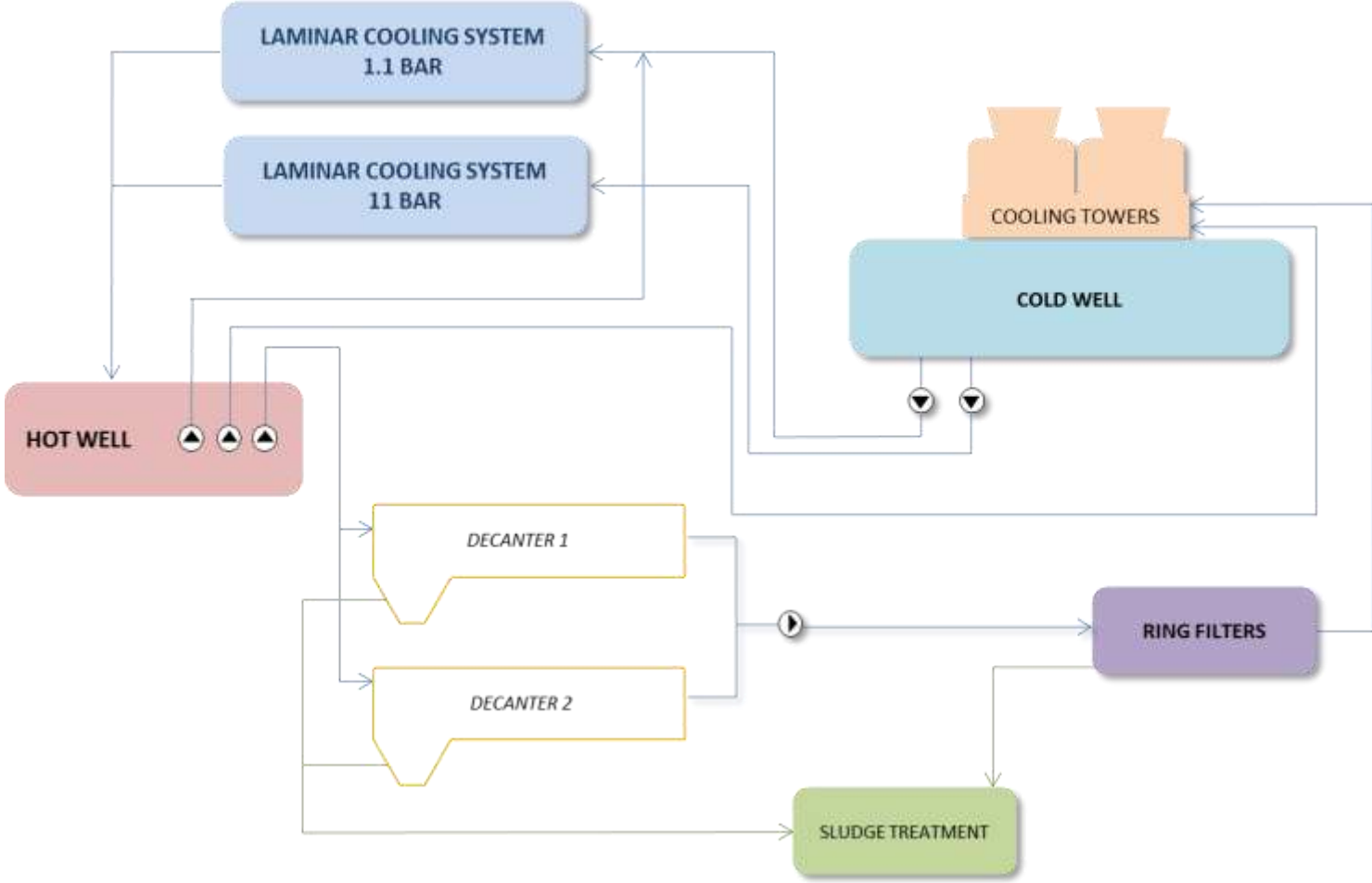
**CW LAMINAR**

**WATER:** Dirty

**PRESSURE:** 2/12 bar

**FLOW:** 7100 m3/h

**25% FILTERED**



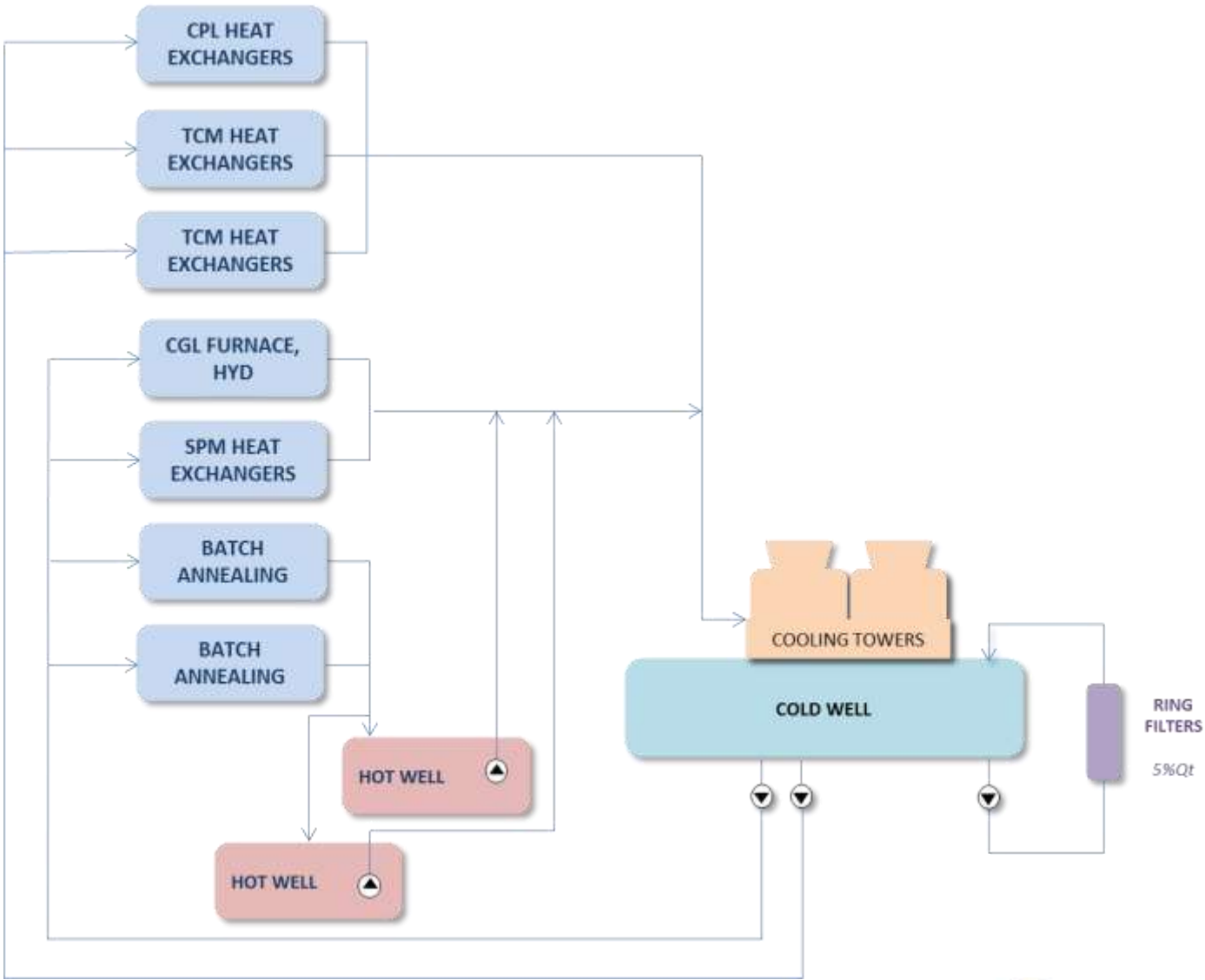
# NCW Cold Mill

**WATER:** Clean

**PRESSURE:** 6,5 bar

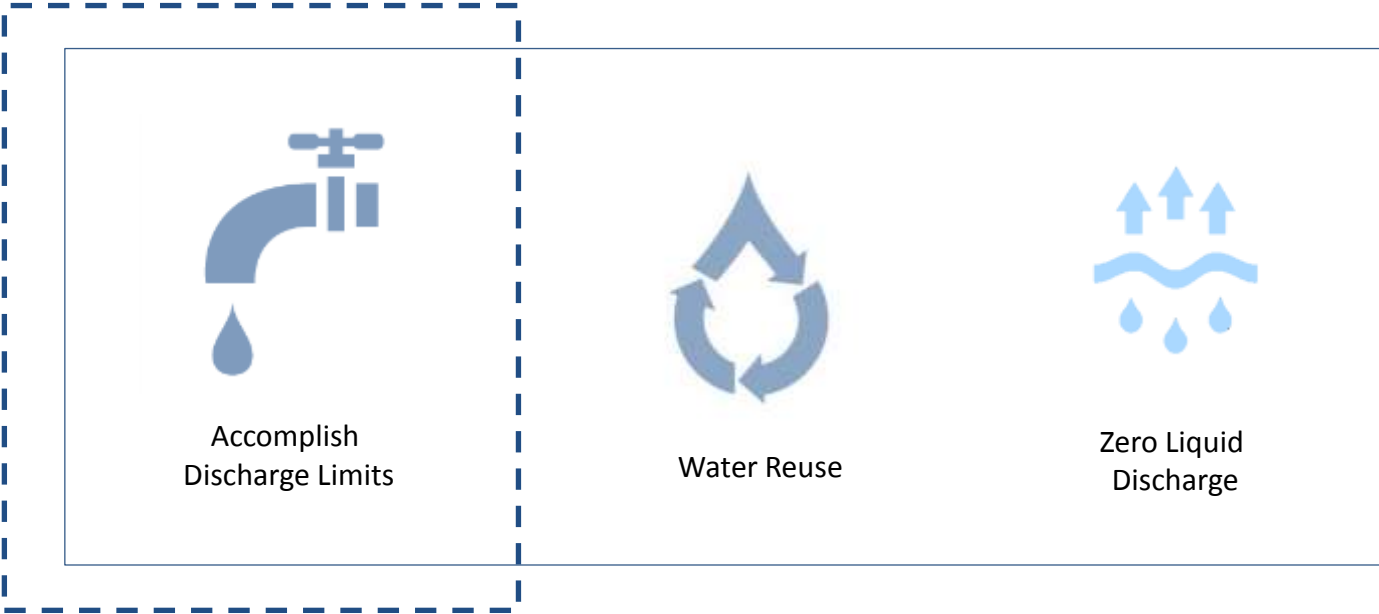
**FLOW:** 3055 m3/h

**FUTURE EXPANSION**



**EFFLUENT DISCHARGE**





Remove from the waste water and cooling towers blowdown:

- Oils
- Solids
- Heavy metals
- Adjust pH

A solid blue rectangular box with the text 'Accomplish Discharge Permits' centered inside in white font. A large blue curly bracket on the left side of the box groups the list of items above it.



# Waste Water

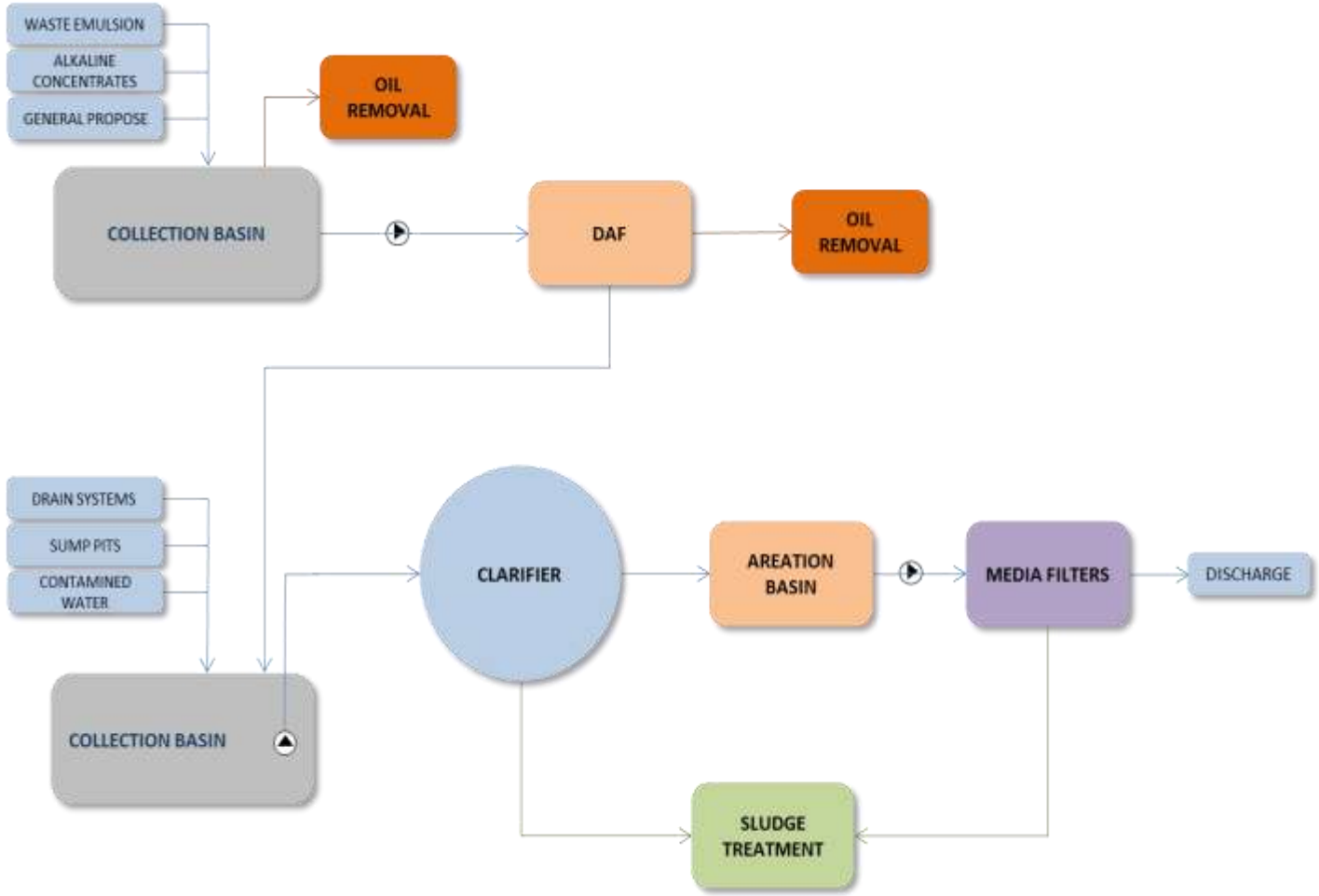
**WATER:** Waste

**PRESSURE:** 2 bar

**FLOW:** 100/180 m<sup>3</sup>/h

**OIL REMOVAL (DAF)**

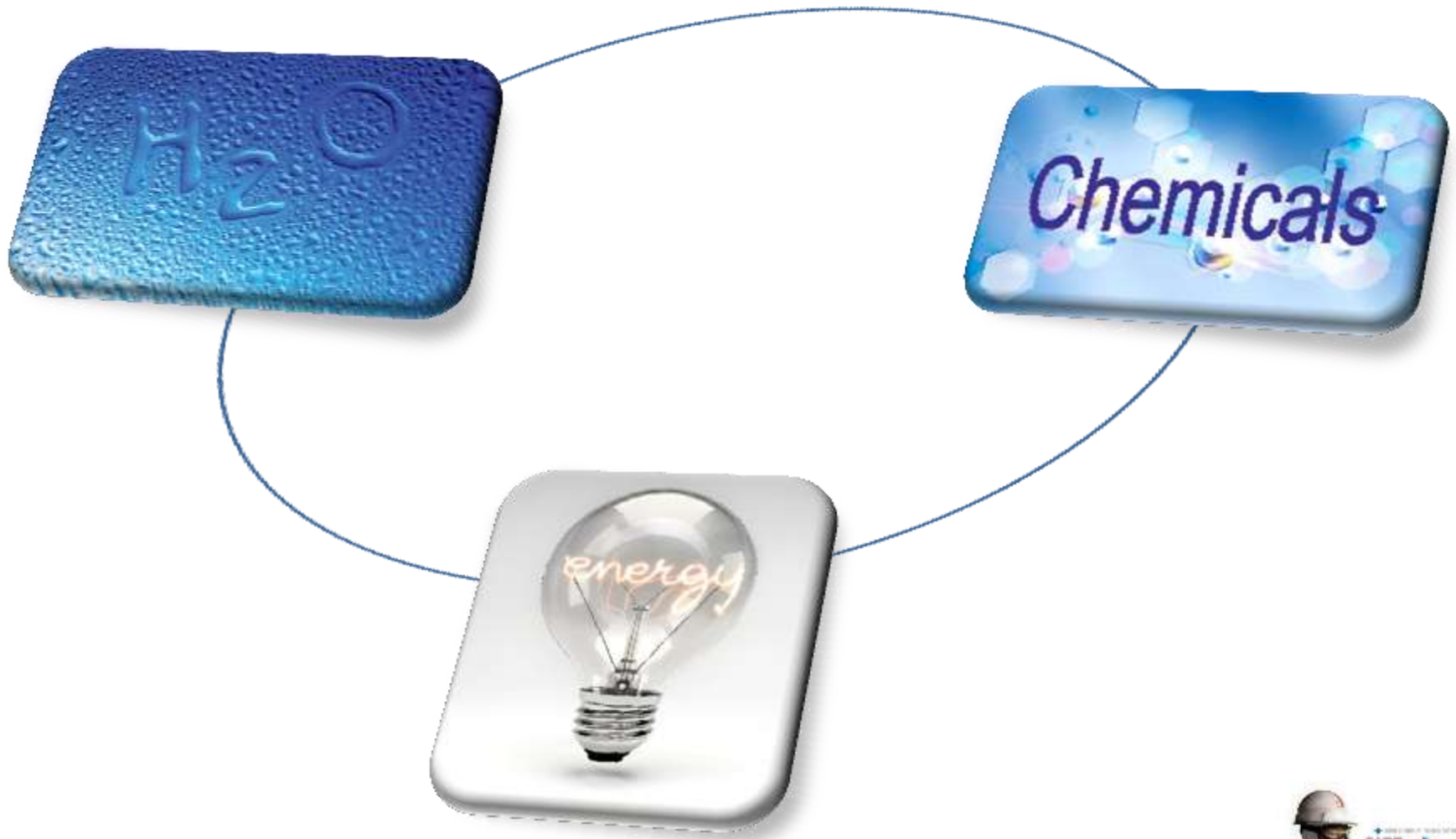
**PH CONTROL**





**EFFICIENCY**

## OPERATIONAL COSTS



## WATER

**MORE THAN 30000 M<sup>3</sup>/H (130,000 GPM) PUMPED !!**

### Low Water Consuming Equipment Selected:

- 12000 m<sup>3</sup>/h ( 53000 GPM) filtered.
- Ring Filters reduce drastically backwash water.
- Only 4 m<sup>3</sup> per battery.

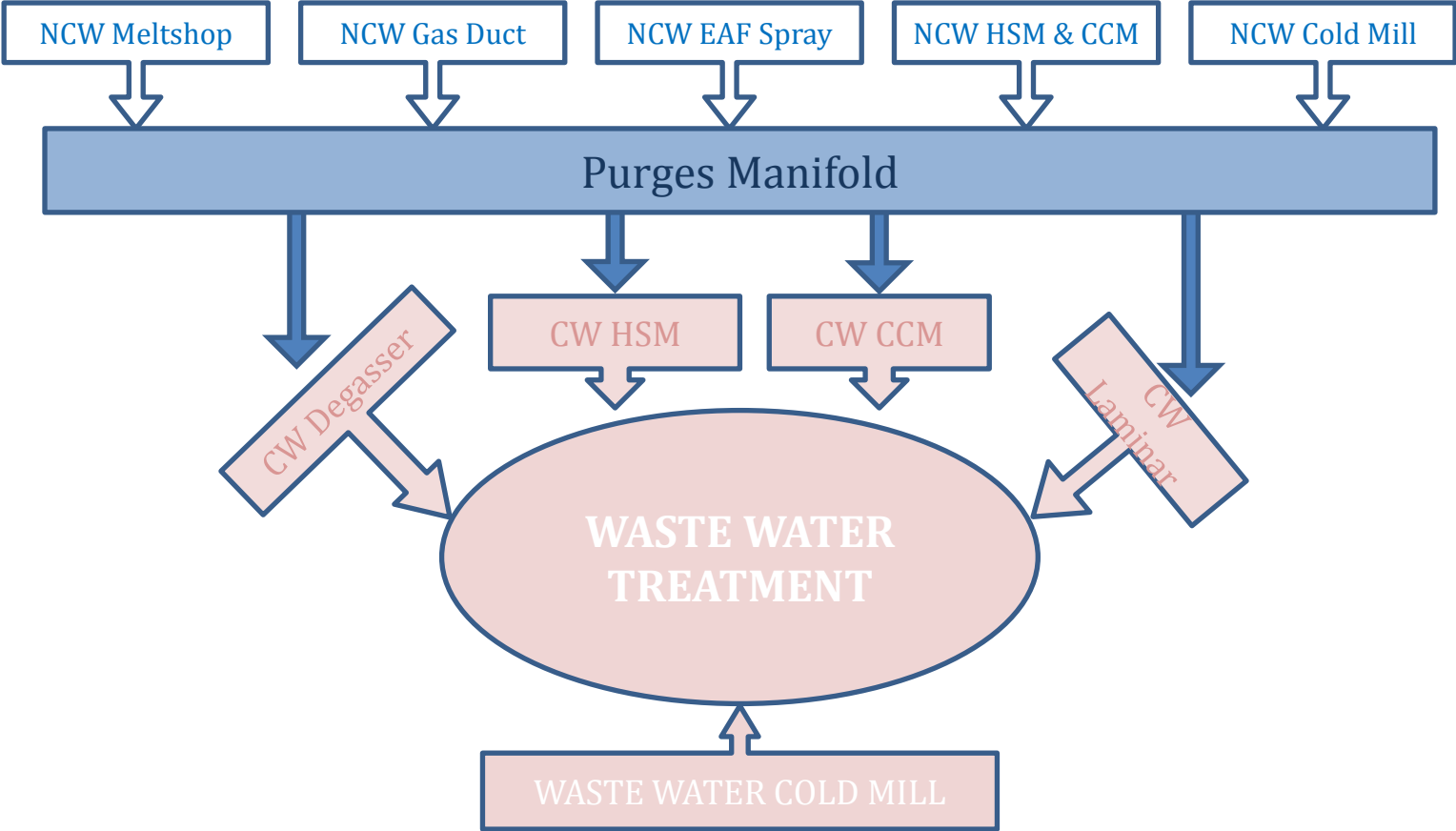
### Sludge Dewatering :

- Installed a Press Plate per Contact Circuit.
- Humidity values up to 20%
- Water recovered.

### Water Reuse

- Water used more than one time
- Blowdown distribution system

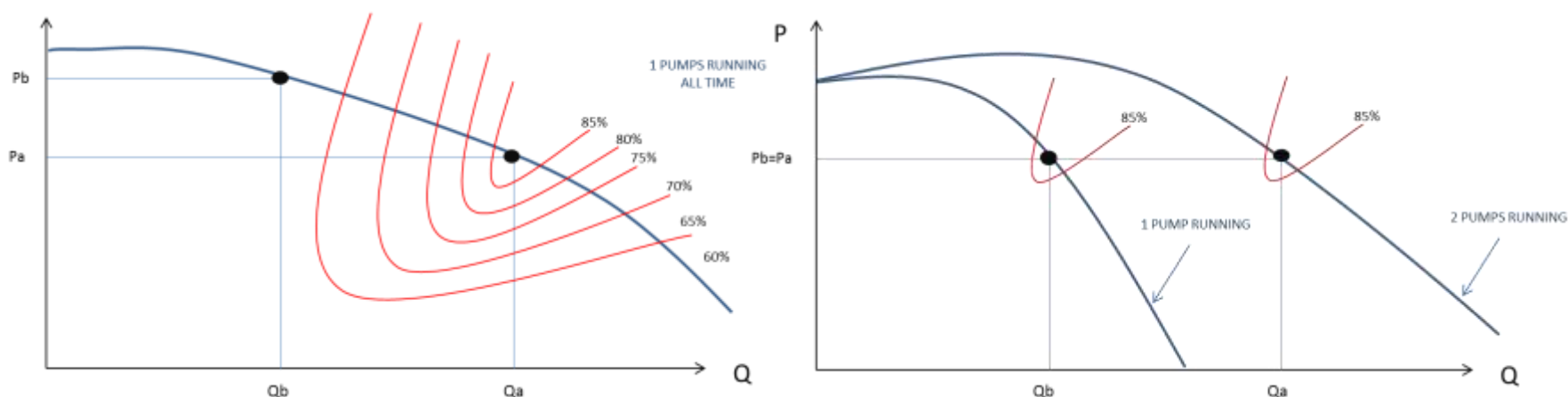
**WATER**



**ENERGY****23 MW Installed !!**

Pump Selection

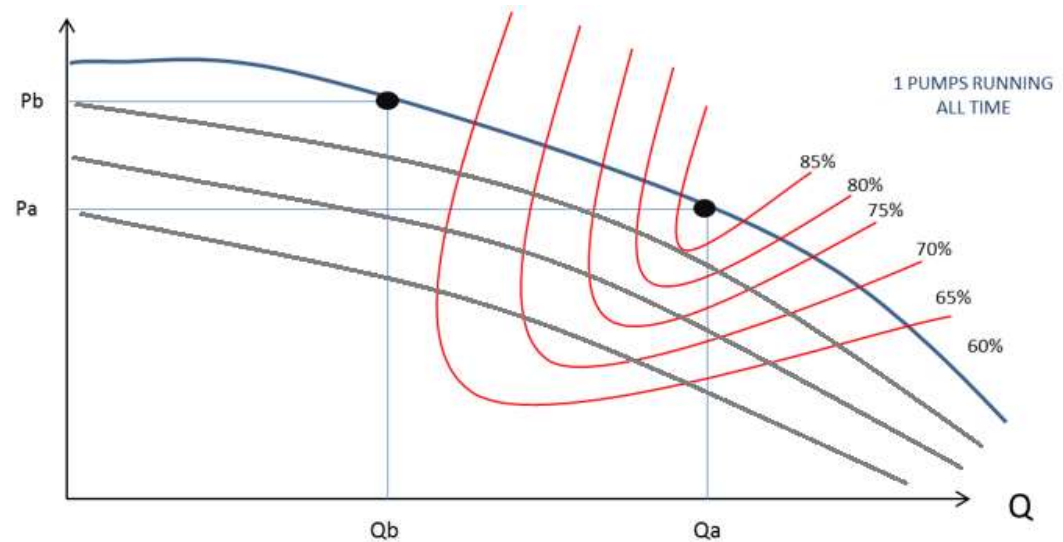
: “More is better” ( NCW)



“NCW Pumps feed different areas with different simultaneity.  
Better to split in more pumps and keep soft starter than big pump”.

**ENERGY**

## Variable Speed



- In contact circuits ( CW) with flow difference depending on product mix.
- All Cooling Towers fans, due to temperature variations.

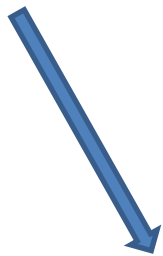


## CHEMICALS

Close collaboration between BRS / Cheamtreat/ Russula

Chemical signals link to main system

Fast Response to system changes ( Oil spillages, etc)



- NEW TECHNOLOGY IMPLEMENTED PUSHING TOWARDS MOBILE DEVICES.
- WIFI COVERAGE IN WHOLE WATER FACILITY.
- MONITORIZE WHENEVER, WHEREVER



# THANK YOU

*Juan Kessler*

[jkessler@russula.com](mailto:jkessler@russula.com)

*[www.russula.com](http://www.russula.com)*



STEEL'S PREMIER TECHNOLOGY EVENT  
**AISTech2016**  
16-19 May • Pittsburgh, Pa., USA  
David L. Lawrence Convention Center

